

LEAP



LAKE SIDE EARLY ADULT PROVISION

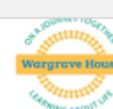
INTENT:

LEAP demonstrates a strong Curriculum Intent through providing personalised pathways which promote resilience, independence and employability.

Preparation for adulthood skills underpin independence. The impact of this can be seen through purposeful employer links, enhancing engagement for our students.

LEAP ADULT PROVISION 19-25 CURRICULUM

On a journey together, learning about life



INTENT	A curriculum which enables <u>all</u> learners to become the best that they can be	Curriculum Aims	SUCCESSFUL LEARNERS who take pleasure in their learning, make progress & achieve		CONFIDENT INDIVIDUALS who are able to lead safe, healthy & fulfilling lives		RESPONSIBLE CITIZENS who make a positive contribution to life in modern Britain		
		Personalised for Learners with ASD (EHCP)	Cognition & Learning	Communication, Interaction & Flexibility	Social, Emotional & Mental Health	Sensory & Physical	Independence & Self-Help		
		Preparing Learners for Adulthood	Employment	Independence		Community, Friends & Relationships		Health & Well-being	
		Outcomes	ATTITUDES & ATTRIBUTES Determined, adaptable, resilient, confident, risk-taking, enterprising		SKILLS English, maths, technology, self-directed, team workers		KNOWLEDGE & UNDERSTANDING big ideas that shape the modern world		

IMPLEMENTATION	The curriculum is an entire planned personalised learning experience underpinned by a broad set of common values & purposes addressing the needs of learners with ASD	Organisation	LEAP 1 (JD)				LEAP 2 (PA)			
			Individual learning pathway determined by prior attainment, goals and aspirations with the EHCP							
			ENGLISH	MATHS	CREATIVE TECHNOLOGIES (Computing)	HEALTH & FITNESS	OCCUPATIONAL LEARNING	COMMUNITY INCLUSION	INDEPENDENCE & PERSONAL DEVELOPMENT	QUALITY OF LIFE
		CORE COMPONENTS	INDIVIDUALISED		PERSONALISED THERAPEUTIC INTERVENTION		INCLUSIVE		ASD SPECIFIC	

IMPACT	To make learning & teaching more effective so that learners understand quality and how to improve	Assessment for Learning	Integral to effective planning	Focus on how students learn	Develops the capacity for self & peer assessment	Promotes understanding of goals & criteria	Helps students know how to improve	Fosters motivation	Sensitive & constructive	Recognises all aspects of achievement	Key professional skills	Equitable Practice		
		Individual Student Progress	COGNITION & LEARNING <ul style="list-style-type: none">SOLAR/RARPA4 Functional and Adaptive progress steps data		EHCP OUTCOMES <ul style="list-style-type: none">Annual ReviewIndividual MTP		ATTITUDES & BEHAVIOUR <ul style="list-style-type: none">Incident dataBSPStudent Voice/Tutorials		ATTENDANCE & ENGAGEMENT <ul style="list-style-type: none">Attendance dataEngagement scale		ACCREDITED LEARNING <ul style="list-style-type: none">SOLAR/RARPAAccreditation outcomes		COMMUNICATION & INTERACTION <ul style="list-style-type: none">FCRS	
		Accountability Measures	Quality Assurance				POSITIVE TRANSITIONS				DESTINATION DATA			
			Lesson visits	Student voice/work scrutiny	Learning Walks	Walk about								
			DARA				SCIP				Lead Governor Reports			

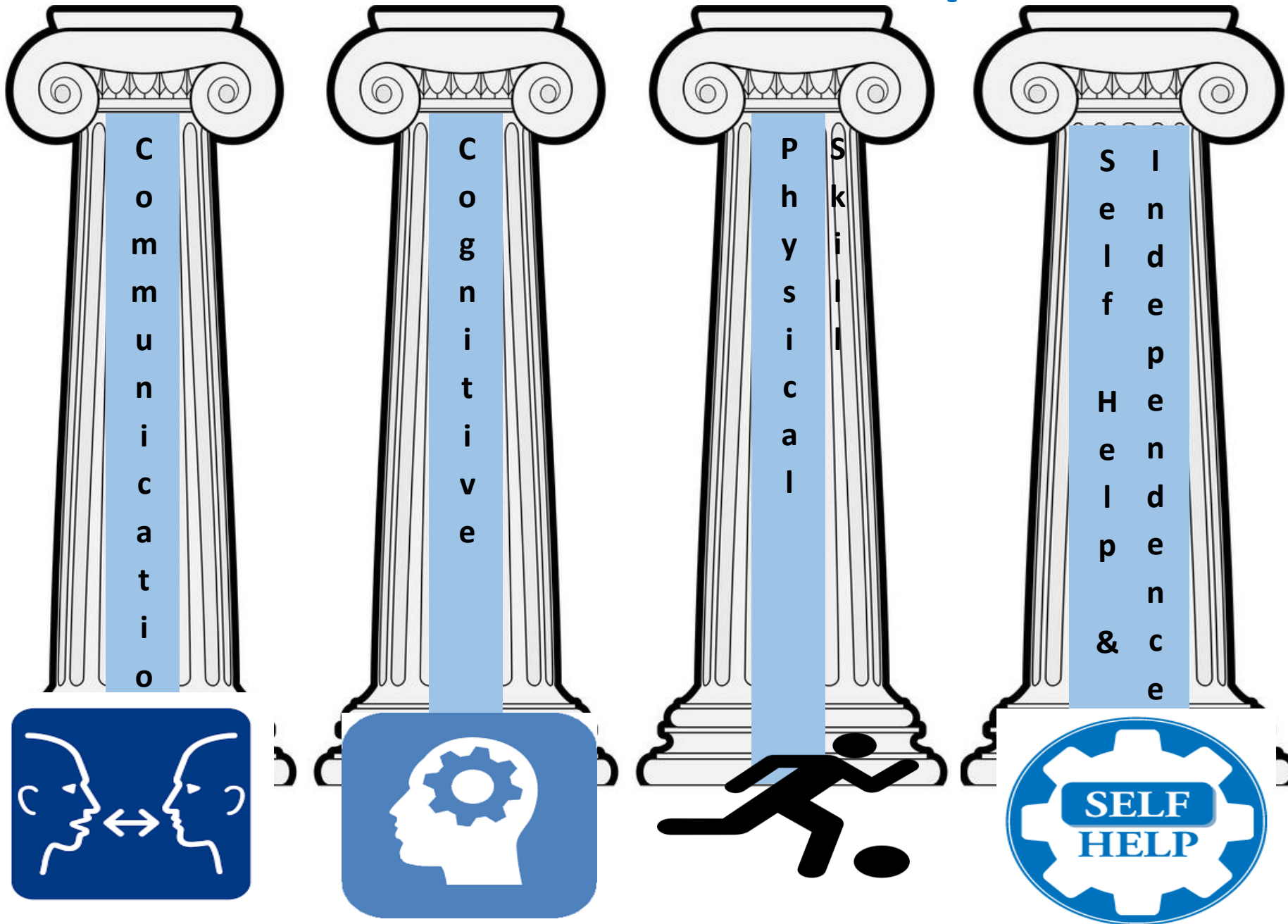
*On a journey together, learning
about life*

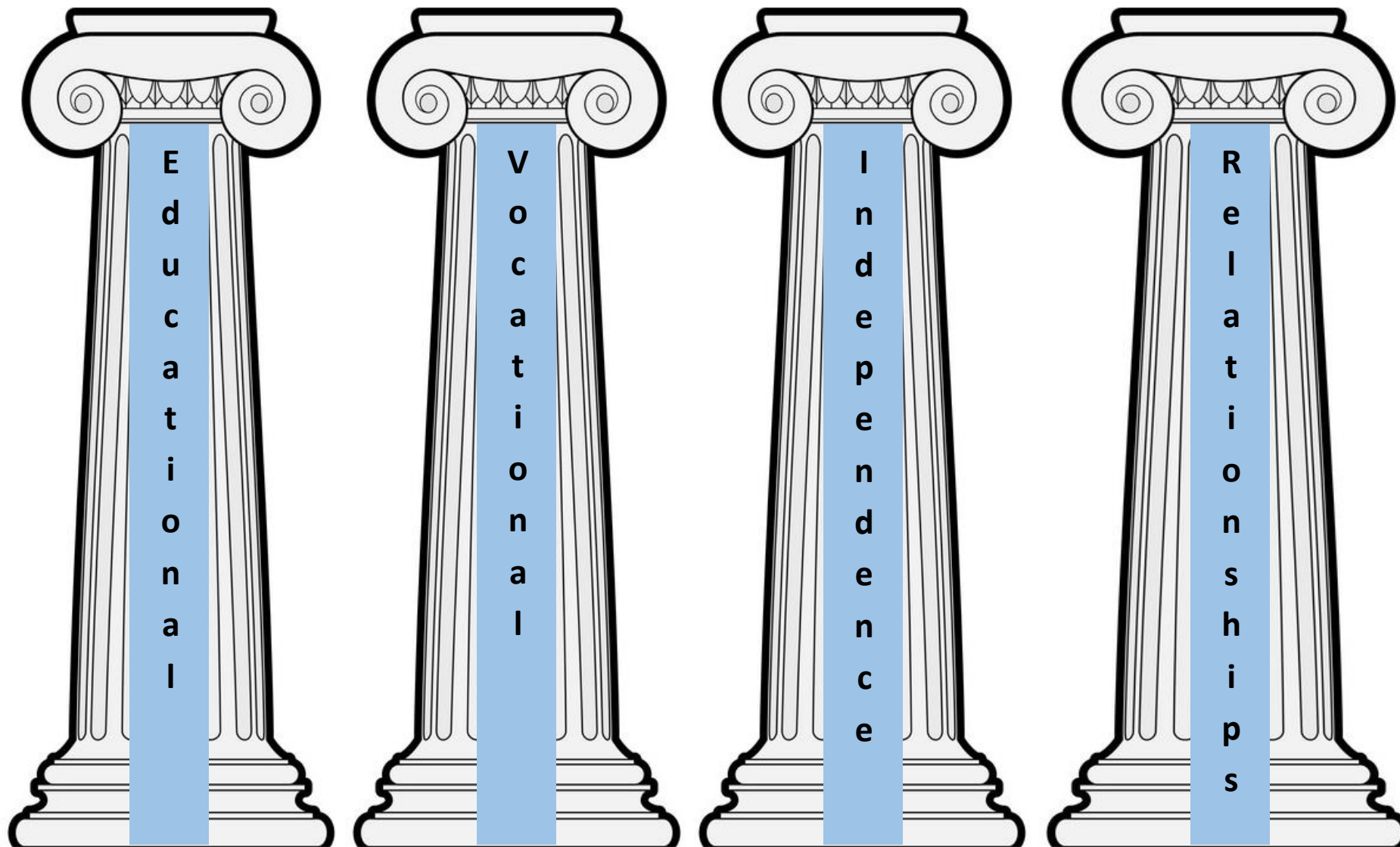


QUALITY of EDUCATION



Foundation Curriculum Implementation





Main Curriculum Implementation

Evidencing Student Progress

[illegible]

Independent Living Skills



Quality of Education

Building Relationships



Students in the workplace **INDEPENDENCE**



Quality of Education

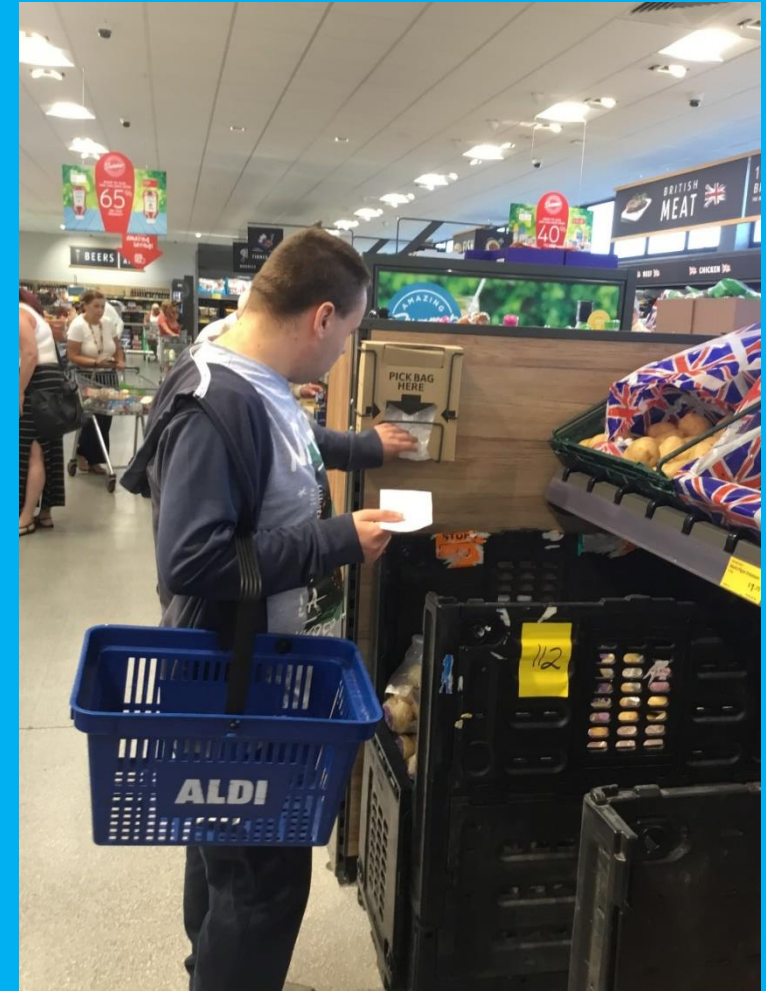


Students in the workplace RESILIENCE

Behaviour and attitudes



WIDER COMMUNITY ACTIVITIES



Personal development

INDEPENDENCE and PERSEVERANCE

Leadership and Management

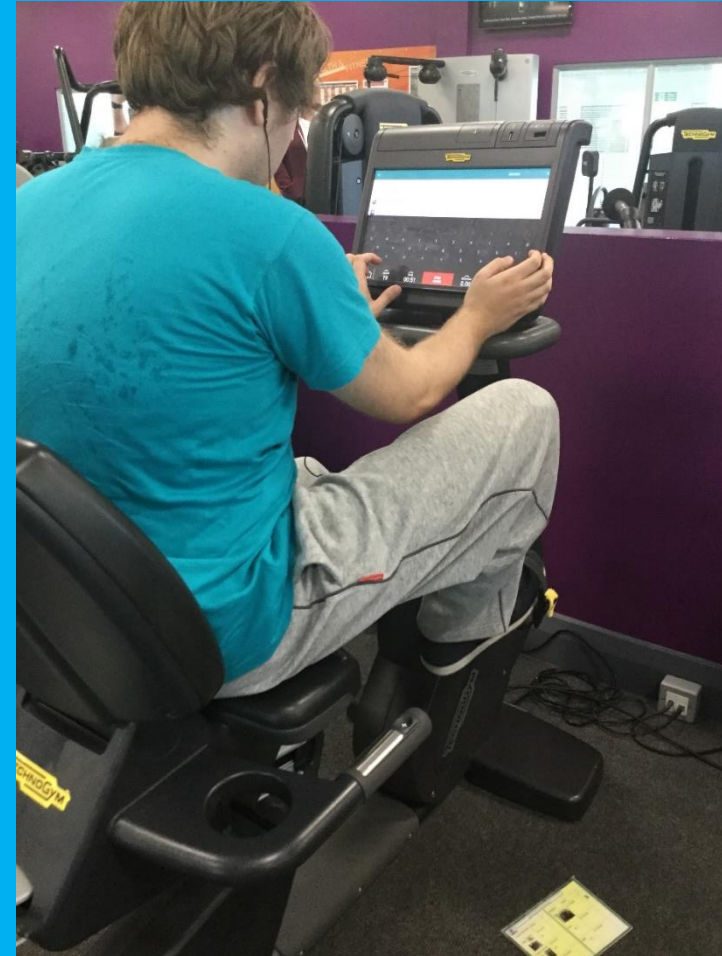


Self Help and Independence



Personal Development

Health and Wellbeing



Quality of Education

NATSPEC Student Parliament

Together we are stronger



Personal Development





Behaviour & Attitudes

STUDENT VOICE

Goals & Aspirations

