



LAKESIDE & LEAP NEWS



NATSPEC Awards 2020

Award: Partnership Working
Project Title: Post 16 and Friends of Lyme and Wood Community Project

LEAP students have been shortlisted for a Natspec Award in Partnership Working. Our entry will go forward to an independent panel chaired by Nigel Evans, former lead HMI for high needs. The panel will choose a winning entry for each award category. The original plan was to announce the winners at the Natspec National Conference in May. As that is no longer possible, this will be rescheduled for a time when everyone can come together again as a sector at the Natspec Principals Forum at Conference Aston in Birmingham on 8 October. It will be a great way to celebrate the remarkable work of specialist colleges and the staff and learners within them. We are proud to be one of the shortlisted entries.

Emily's Rainbow

Emily N wanted to spread some happiness and hope to everyone during these uncertain times by drawing this rainbow outside the front door of school, with the words "Keep Smiling".



Flying her Flag

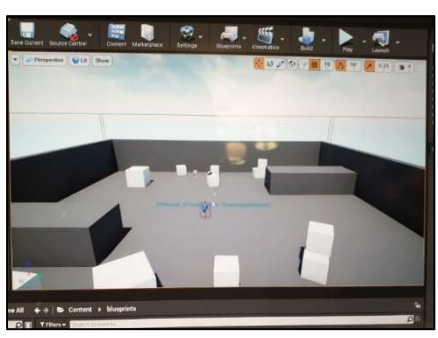
Emily has been keeping busy during the lockdown by searching through her home to find items that express her personality, and is expressing her right to celebrate her individuality by creating an incredible flag to celebrate and support a cause that is dear to her heart! Only trouble now is that she's got to put all of the items away again!



Working from Home

Christian has been doing between 1-2 hours every day last week and this 1-1 tutoring on line with his brother, which has been working well. He has been doing multiplication subtraction and division with numbers over 1000. This week he started doing some simple programming using unreal engine following a 25 minute online demonstration. In light of the Art course he has been accepted for, we hope that he might have a project to show for his time off. He has also walked the dog every day and been cycling on nice days.

We are pleased to hear that Harry is cooking with his family, Owen is generalising his independent living skills into the home and has supported mum, Benji is home learning with family, Rory is settled at home and doing maths activities which he is enjoying.



If you would like any support regarding home learning, or if you would like to share any photos or stories about home learning or experiences, please send them to:

julietdoherty@wargravehouse.com
philipadams@wargravehouse.com
stephenhogarth@wargravehouse.com
elainegreen@wargravehouse.com